

# Project and Programme Management

Complete Project Assurance from beginning to end.

“It’s more than qualified Project Managers that engage in your projects. So- we designed InPhase for anyone to use on an ad-hoc basis, with no training.”

Gordon Lock - Head of Development, InPhase

InPhase is the connection between employees, the delivery and performance of all projects and strategic goals.

If you want to easily create a culture where the delivery of successful project goals and benefits is paramount, InPhase is the tool of choice.

InPhase focuses everyone on what matters, giving them assurance, and the ability to act quickly when needed.

InPhase will support your entire business ecosystem, from suppliers to customers and distributors.

## Key Project Benefits

We’ve ensured you have all the tools you need to get your projects running smoothly.



Project Activity and Performance



Wiggle-room notifications



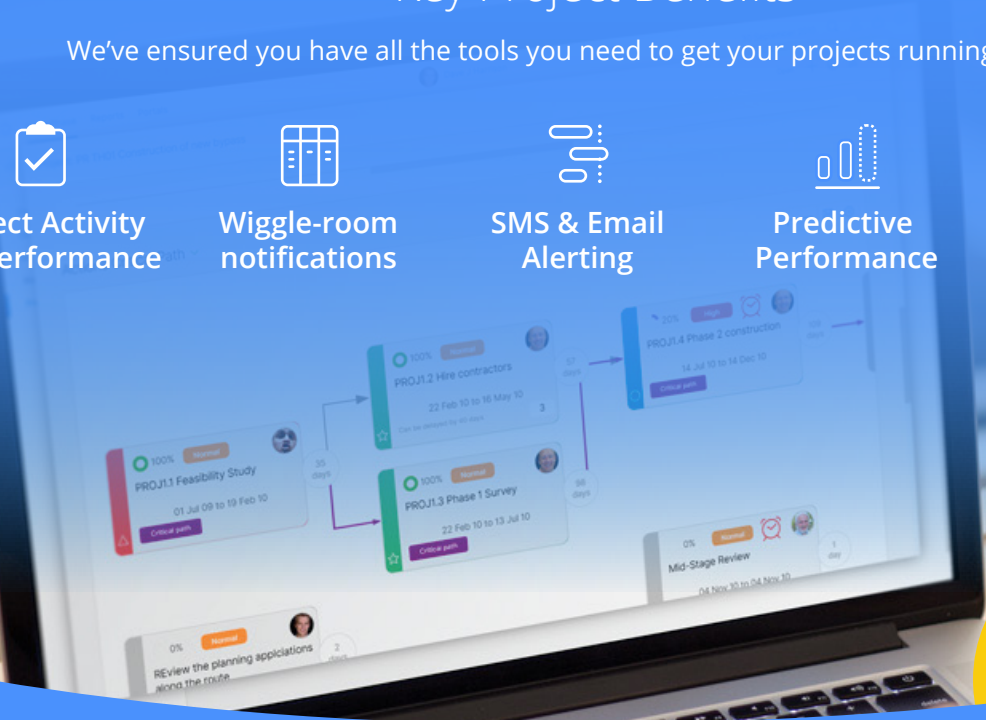
SMS & Email Alerting



Predictive Performance



Critical Path Planning



## Understand why things are happening and what to do about it.

Get straight to the issues that matter inside each project. Let everyone see what matters to the primary stakeholders and why, helping them retain focus on the outcomes and benefit rather than losing sight of the purpose.

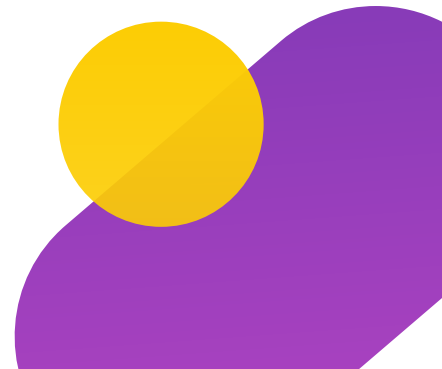
- ✓ See every project through meaningful insights to monitor and optimise performance over time.
- ✓ Improve team focus and efficiency, keeping everyone on track with what's most important.
- ✓ Manage the entire PMO lifecycle from ideas management, to sign off, PID and operational deployment.
- ✓ Work out which projects will have the best impact on performance
- ✓ Always-on project feedback and review for continual adjustment and readjustment of operational activity to deliver business value.
- ✓ Balance projects across costs, benefit, resource commitment and the virtual business.

## Predict what will happen in your project next!

- ✓ Spot problems before they happen and react faster for a speedy decision experience.
- ✓ Visualise the impact or predicted performance of the project on your business ecosystem.
- ✓ Put the right information in front of the people that can improve performance of the projects, real time. Whether this is role based project reporting, or leadership assurance, everyone can act on the project insights.

## Make PMO a daily routine for everyone and a critical part the decision experience

- ✓ Collaborate across the organisation with chat, setting deadlines, tracking risks, mitigating actions, and the entire project lifecycle.
- ✓ Always on, live updates direct to your inbox and personal home pages for project briefings and discussion.
- ✓ Increase accountability and ownership of purpose and outcome.
- ✓ Enable your virtual project teams to work collaboratively via the cloud, reporting and reacting real-time to historic, current, and predicted outturn performance.



## Tie it all together!

Bring data, discussion, planning, emails, files, documents, images and more into InPhase with 100's of integrations to choose from, so you can see everything in one place.

Discover a whole new way of working.  
Get in touch, today.

☎ 01753 480 480    @ info@inphase.com