

Quality Oversight

Drive a culture of care quality improvement.



CQC



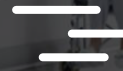
NICE



Policy



Audit



Actions



CAS



KPI

CQC

Self-assessment and ward accreditation – assurance that you have visibility of the quality actions for your organisation.

NICE

Compliance and assurance of the latest guidance automatically loaded and configured for your organisation.

Action

Manage all quality actions and action plans across all teams and action types.

QI

Track and report on progress of your quality improvement plan and report in real-time.

Policy

All policy lifecycles managed in one place and can be used as evidence for CQC.

Audit

Track lifecycle progress of all audits in one place.

NHSI

Well-led and use of resources framework, pre-loaded.

CAS Alerts

Automatic import of CAS alerts to review and take action.

Improving and maintaining care quality just got easier

Quality Oversight brings all of your quality assurance information together into one place.

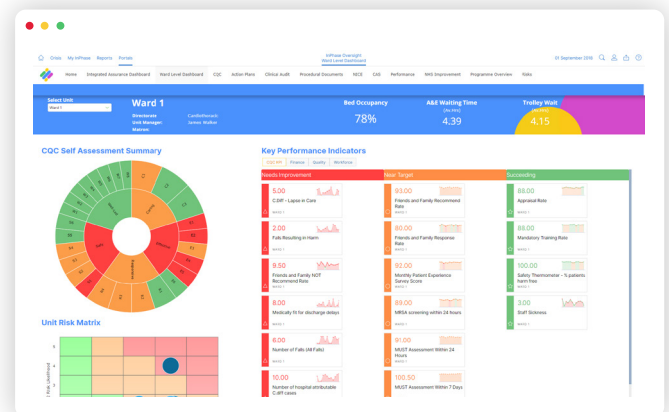
Assess and evidence your achievement of CQC quality, NICE Guidance, your own policies, identify weaknesses, collaborate, and decide upon actions for improvement. Manage the completion of actions and capture the effectiveness or non-effectiveness of the actions on quality improvement. All in one system, improving assurance at all levels.

Quality culture

Support a culture of commitment to quality with the support of Quality Oversight from InPhase.

Staff at all levels have easy access from any device to understand their own data and how it impacts the wider trust.

Provide robust, reliable and evidenced assurance from teams to ward to board.



“ There’s been a really positive impact on culture within the trust as a result of InPhase, and I have to say that was quite unexpected, it wasn’t something that we had particularly expected to happen quite so quickly. ”

Director of Nursing & Quality Improvement
Wirral Community NHS Trust

Fit for purpose

Complete quality assurance without a scrum of spreadsheets, documents, emails, PowerPoints and a hodgepodge of data from multiple out-of-date systems of dubious fitness for purpose.

Real-time reporting across all teams, locations, areas including consolidation for division, trust or region.

Updated automatically by InPhase with the latest CQC frameworks and NICE Guidance.

Create a commitment to care quality



County Durham and Darlington NHS Foundation Trust required a system that would give them a comprehensive picture of quality. At any time, staff at any level can access their team quality dashboards, easily identify trends and understand what actions must be taken with Quality Oversight.

- ✓ Drive improvement plans
- ✓ Full action management tracking
- ✓ Management of audits' lifecycle
- ✓ Single source of organisation wide assurance
- ✓ Supports cultural engagement and collaboration
- ✓ Automated alerting, providing actionable insight

Over 40 of the 55 Circle hospitals using Quality Oversight improved CQC ratings within 2 years.

"One of the key elements for us was the responsiveness from the InPhase team. Sometimes they made changes literally overnight. We would email one evening and it was done by the next morning, the response from the team has been fantastic. I really can't ask for more."

Head of Quality Assurance and Assessment
Circle Health Group

To create a culture of commitment to quality, speak to one of our InPhase experts about Quality Oversight.



01753 480 480
hello@inphase.com

Rationalise systems

Consolidate all your quality information.

Combine quality assessments with key quality indicators, and with more than 20 other Oversight App's information including patient safety incidents, enterprise risks, clinical audits, projects, action plans and more.



Wirral Community Health and Care NHS Foundation Trust implemented a new governance framework, known as SAFE, using Quality Oversight, uniting all divisions within the organisation under the same standard of care to support them in providing high-quality patient care across the organisation.

